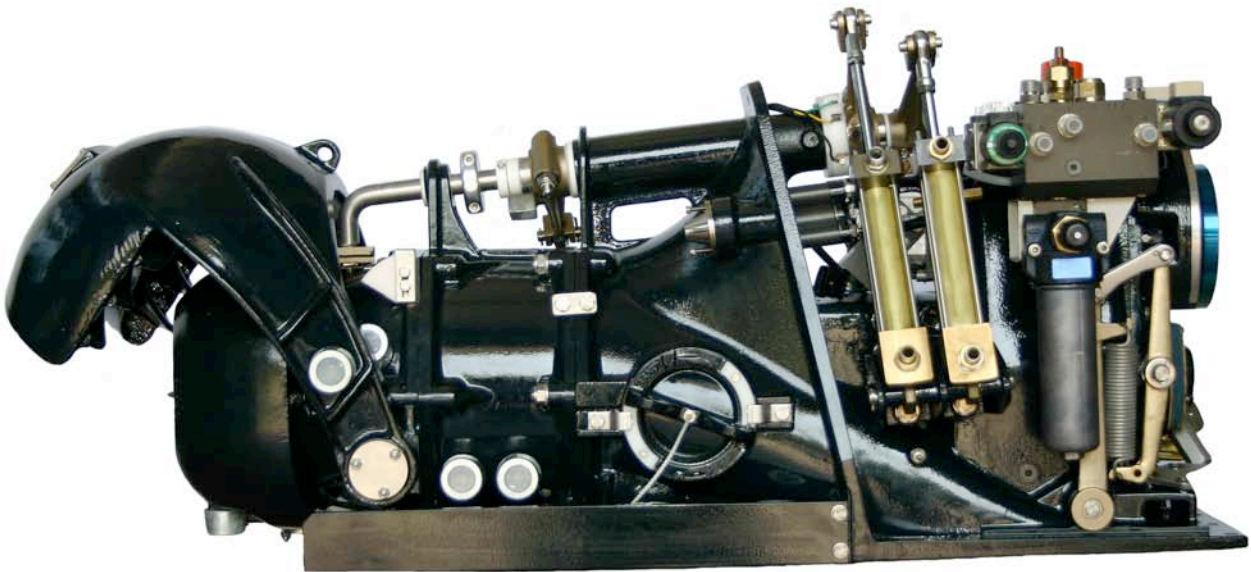


The new advanced water jet unit Castoldi model “Turbodrive 238 - H.C.” available on the market.



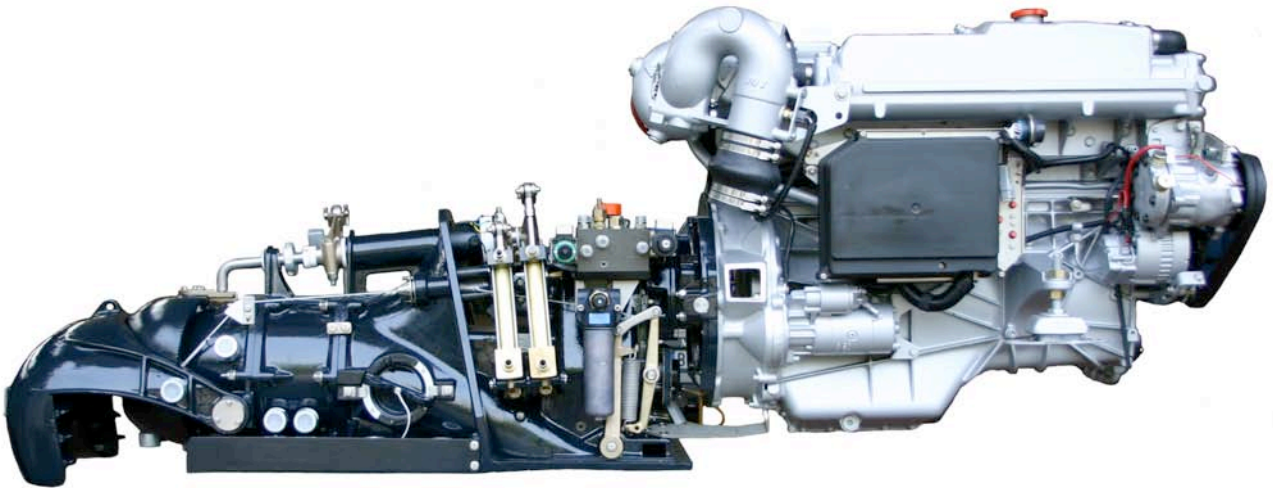
2004-8-3

With this unit a new model has been added to the H.C. range of Castoldi water jet drives (now including No. 3 units for power up to 1100 KW).

The acronym H.C. means “Hydraulic Clutch”, the most significant exclusive feature of this model consisting in a multi disc hydraulic clutch, electrically controlled in order to engage and disengage the jet’s impeller with engine idling.

Another exclusive feature of all Castoldi units is the integrated gear box which, with its No. 18 available ratios, allows the perfect matching to the engine while saving cost and weight of a marine transmission.

Furthermore, the built-in gear box has the input shaft above the impeller shaft so allowing to install the engine close to the jet (through a special coupling kit available by Castoldi for most of the existing engines), the best solution to save space inside the boat for an easy installation.



In the same time, the horizontal low placed impeller shaft permits a straight and flat duct which, lowering the center of thrust, increases manoeuvrability, stability and improves high speed efficiency.

Other exclusive features of this drive are:

- The movable debris screen grid which, operated after having disengaged the jet unit, performs the most efficacious anti clogging operation by rejecting any debris through the two stages opening of the profiled grid bars.
- The Castoldi concept “multi duct” reversing deflector which develops approx. 70% of the forward bollard thrust.
- The “B.P.R.”, an additional fixed water intake which increases the thrust at low speed without affecting high speed performances. Particularly suited for heavy boats.
- The “T.T.J.”, a revolutionary device, which reduces the boat’s planning time.
- All oil lubricated bearings.
- The integrated water pick-up for engine cooling.

All these features make the “Turbodrive 238 - H.C.” probably the most complete, lightest and efficient water jet drive of its own class on the market, capable of even matching stern drives for high speed operation but with the greatest manoeuvrability also in single installation, reduced draft allowing shallow waters operations, the maximum active and passive safety and a greatly increased life with few maintenance requirement.

“Turbodrive 238 - H.C.” weights Kg. 110 only and it can be matched to engines up to 420 HP.

It is ideally suited to equip fast patrol and pleasure boats typically in the 6-10 m. and 2-6 tons range in single or twin installation.

The “Turbodrive 238 - H.C.” is supplied with an hydraulic steering-helm, an hydraulic, electrically controlled, reversing deflector with its own indicator and the electric control of the hydraulic clutch. All the rams and valves are placed inside the boat supported on the same water jet case for any easy and fast installation and simple maintenance.

