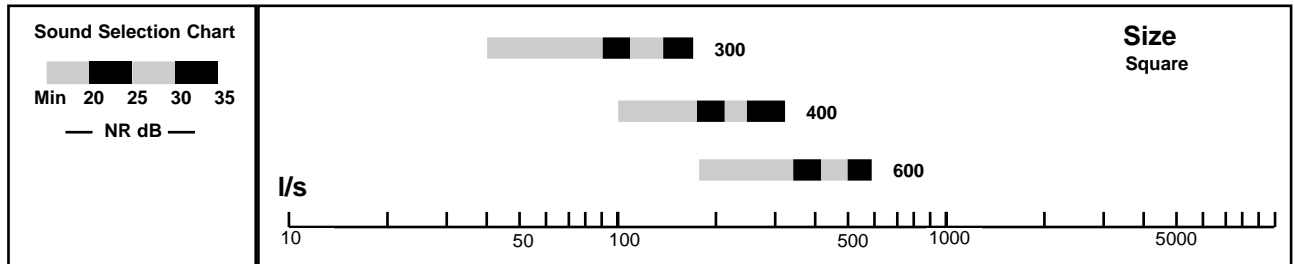


**Selection Guide**



**Ordering Procedure**

Using the chart below select your requirement and substitute the underscored text below.

**Type..X** (X is the nominal face size of the diffuser).

**Example:** If your requirement is for a 400 mm square exhaust air device, the ordering code would be **APME16**. (When ordering it is not necessary to include the periods [..]).

Product Size Numbers										
"Type"	"X" Size									Colour
APME	10 (250)									Powder coat white
	16 (400)									
	24 (630)									
										Special colours

# 2.64

APME

## ENVIRONMENT 2000 EXHAUST AIR GRILLE



### Description

The Environment 2000 range is an exclusive series of air distribution devices with diffuser components that will fit any ceiling.

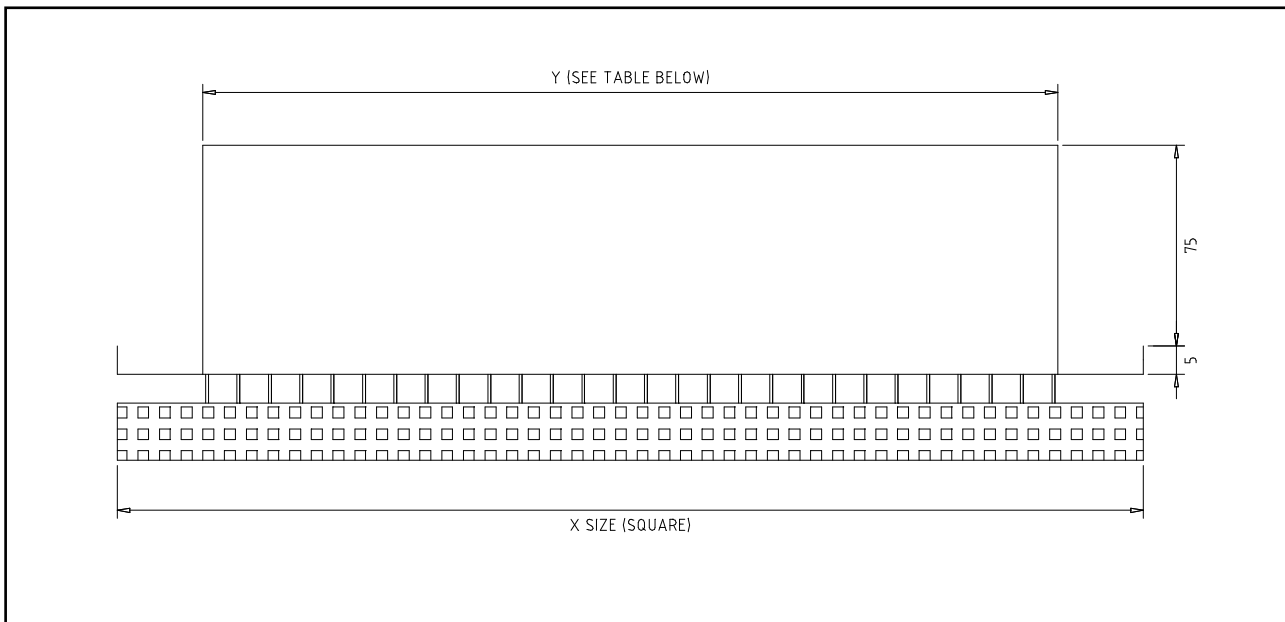
The 2.64 (APME) exhaust air grille matches in appearance the 2.65 and 2.66 diffusers.

After installation there are no visible mounting hardware or fixing components visible.

### Finish

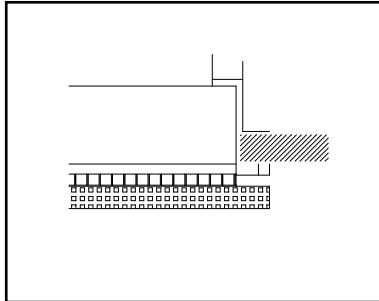
Standard finish is powdercoat white unless otherwise specified.

There are 15 other standard colours to choose from.

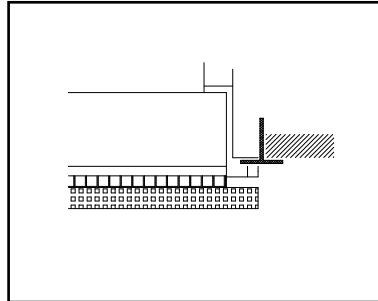


Size	X	Y
300 x 300	300	250
400 x 400	400	350
600 x 600	600	550

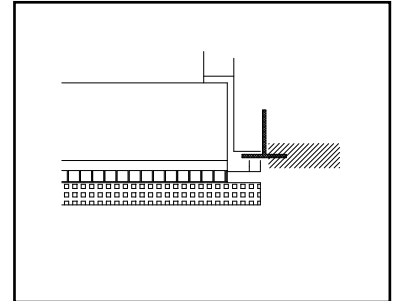
**Applications**



Plaster ceiling



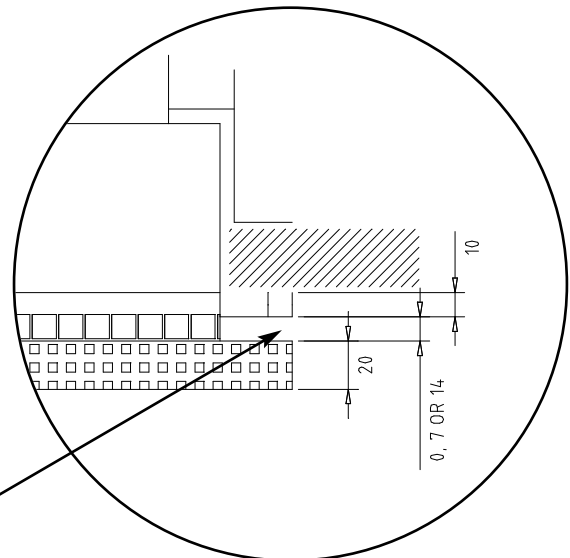
Exposed T-Bar



Concealed T-Bar

Perforated centre core can be adjusted to any one of three positions from face side of grille.

0 mm, 7mm & 14 mm  
Adjustable gap



**Sound data**

NR levels for the grille may be determined from the engineering graph.

**Sound power level  $L_w$**

The generated sound power level  $L_w$  dB is calculated by adding the correction factor  $K_{Ok}$  (see table below) to the sound level NR dB according to the formula:

$$L_w = NR + K_{Ok}$$

Size	Frequency (cycles per second)						
	125	250	500	1000	2000	4000	8000
300	+13	+11	+10	+8	+5	-1	-11
400	+15	+12	+11	+8	0	-2	-3
600	+19	+14	+12	+7	+5	-5	-10
Tol +/-	2	2	2	2	2	2	2

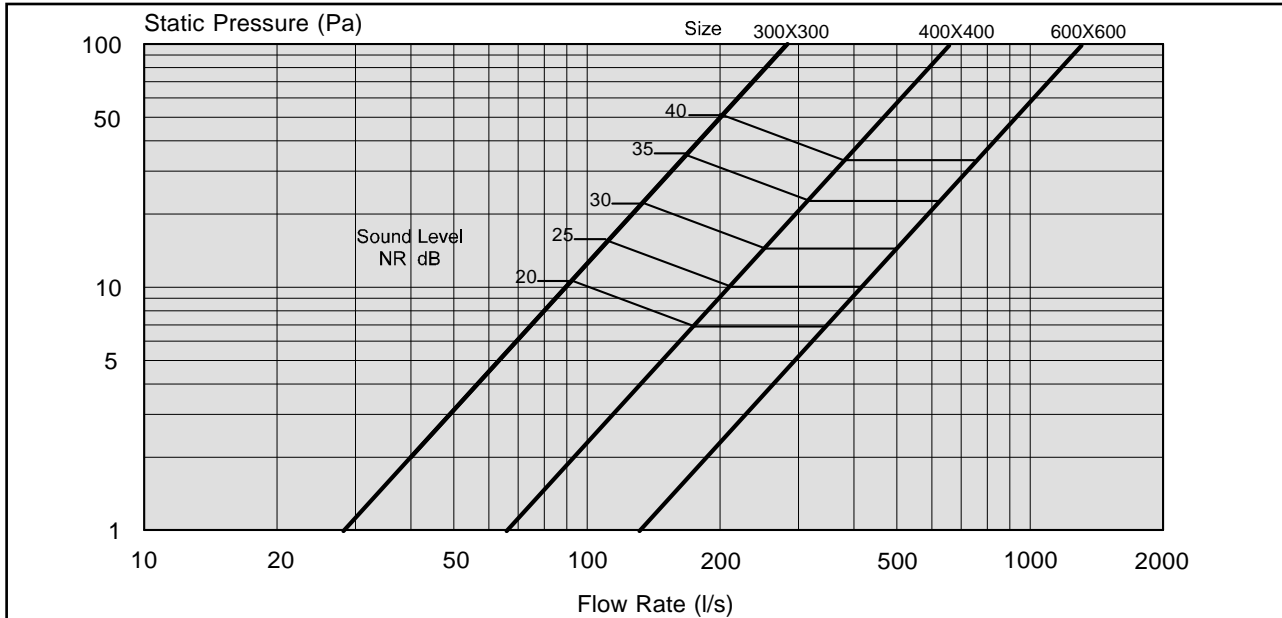
# 2.64

APME

## ENVIRONMENT 2000 EXHAUST AIR GRILLE



APME Exhaust air



These graphs are for selection only and should not be used for commissioning.