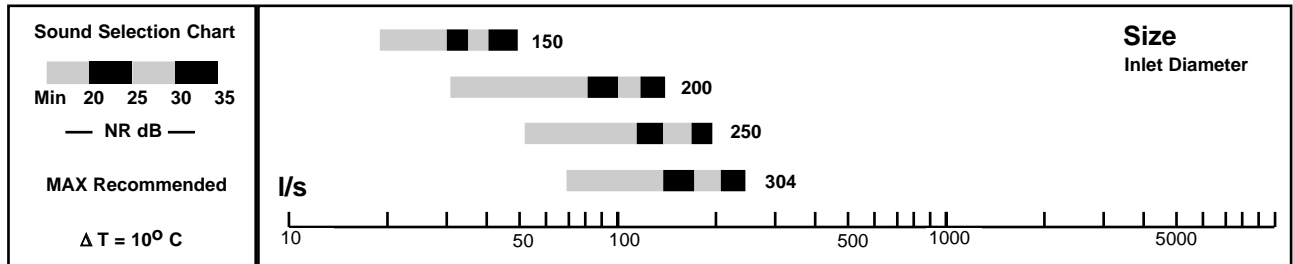




Selection Guide



Ordering procedure

Using the chart below select your requirement and substitute the underscored text below.

Type..X (X is the nominal neck diameter of the diffuser).

Example: If your requirement is for a 200 mm diameter ceiling diffuser, the ordering code would be **ARCD200** {When ordering it is not necessary to include the periods [...]}.}

Product Size Numbers											
"Type"	"X" Size										Colour
ARCD	150										Powder coat white
	200										
	250										
	300										
											Special colours

2.43

ARCD

ROUND CEILING DIFFUSER



Description

The 2.43 (ARCD) Round ceiling diffuser is fabricated from spun aluminium. The diffuser has a round spigot to suit flexible duct. The core is adjustable and acts as both balancing damper and pattern control.

The diffuser may be easily fixed into position using special fixing clips provided.

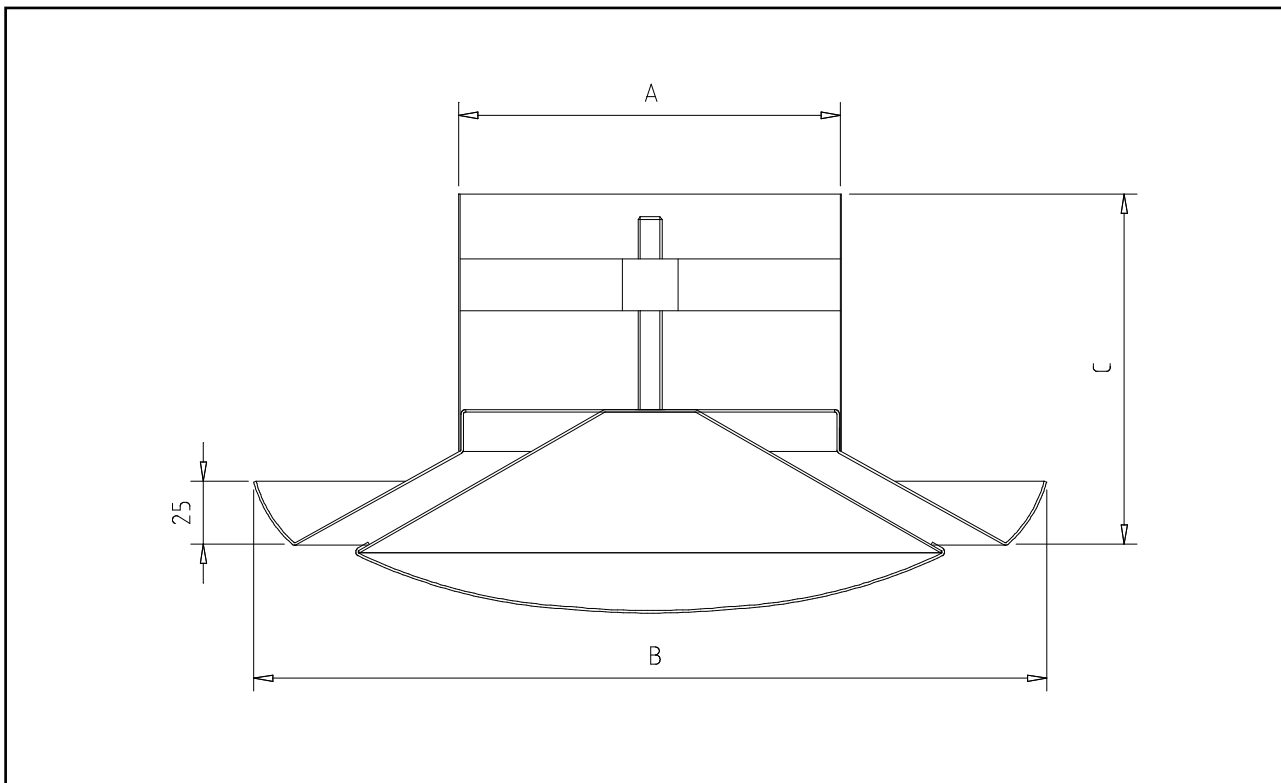
Finish

Standard finish is white electrostatic powdercoat.

There are also 15 other colours available to choose from at no additional cost.

Contact your nearest Bradflo office for any special requirement you may have.

Design dimensions



Product Code	A	B	C
ARCD150	150	310	145
ARCD200	200	360	165
ARCD250	250	410	175
ARCD300	300	460	190



ROUND CEILING DIFFUSER

2.43

ARCD

PERFORMANCE DATA

Note! Throw data is at a terminal velocity of 0.5m/s. Air supply is isothermal

Inlet Diameter mm (in)	Discharge Gap mm(in)	Airflow l/s (cfm)	Statistic Pressure pa (In H ₂ O)	Throw m (ft)	Sound Power Level Octave band centre frequency (Hz)							
					63	125	250	500	1000	2000	4000	8000
150 (5.9)	40 (1.6)	40 (85)	5.5 (.022)	.92 (3.0)	45.0	46.0	45.0	45.0	42.0	34.5	26.5	28.5
	32 (1.25)		7.5 (.030)	1.40 (4.6)	45.0	45.5	43.5	45.0	44.0	35.5	21.5	29.5
	25 (1.0)		23 (0.90)	1.70 (5.60)	43.5	51.5	48.5	45.0	42.0	36.5	30.0	2.3
	40 (1.6)	75 (158)	6.5 (0.26)	1.35 (4.4)	44.5	46.5	44.5	45.0	43.5	33.5	26.5	28.5
	32 (1.25)		8.5 (0.34)	1.70 (5.6)	46.0	52.0	50.0	50.5	51.0	43.5	34.5	23.5
	25 (1.0)		44 (.173)	2.03 (6.7)	47.0	54.0	50.5	50.0	50.5	39.5	31.5	29.5
	40 (1.6)	100 (212)	7 (.028)	1.80 (5.9)	45.0	49.5	47.5	49.0	49.0	41.0	25.5	28.5
	32 (1.25)		13 (.051)	2.50 (8.2)	47.0	52.0	49.0	51.0	51.5	44.5	34.5	23.5
	25 (1.0)		63 (.248)	3.00 (9.8)	48.0	54.0	52.5	50.5	52.5	46.0	36.5	29.0
	40 (1.6)	150 (318)	13 (.051)	2.15 (7.1)	29.5	55.5	54.0	56.5	58.0	52.5	44.5	33.5
	32 (1.25)											
	25 (1.0)											
200 (7.9)	40 (1.6)	200 (424)	21 (.083)	2.95 (9.7)	57.5	66.0	63.0	64.0	66.0	62.0	55.0	50.5
	32 (1.25)		30 (.118)	3.4 (11.2)	56.0	64.0	63.0	61.5	64.5	60.5	52.5	49.0
	25 (1.0)		120 (.472)	3.8 (12.5)	51.5	63.0	63.5	61.0	60.5	58.5	51.5	44.5
	40 (1.6)	75 (158)	16 (.063)	.95 (3.1)	42.0	45.0	40.5	35.5	31.5	22.5	17.5	22.0
	32 (1.25)		30 (.118)	1.5 (4.9)	42.0	45.0	42.5	36.0	32.0	24.5	17.5	23.0
	25 (1.0)		75 (.295)	1.8 (5.9)	42.5	57.0	47.0	43.5	38.0	34.0	25.0	23.0
	40 (1.6)	100 (212)	18 (.071)	1.75 (5.7)	41.5	44.5	41.0	36.0	32.0	23.0	17.5	22.5
	32 (1.25)		55 (.217)	1.85 (6.1)	41.5	48.5	46.5	41.5	37.5	33.5	21.5	23.0
	25 (1.0)		103 (.406)	2.0 (6.6)	42.0	49.5	49.5	47.5	43.0	40.0	33.5	22.5
	40 (1.6)	150 (318)	35 (.138)	2.1 (6.9)	45.0	51.5	48.5	44.0	41.0	36.5	22.5	22.5
	32 (1.25)		96 (.378)	2.2 (7.2)	44.0	54.0	53.5	49.0	45.5	41.5	21.5	37.0
	25 (1.0)		170 (.669)	2.6 (8.5)	44.0	54.5	56.0	56.0	52.0	49.0	44.0	37.0
250 (9.8)	40 (1.6)	200 (424)	57 (.224)	2.4 (7.9)	48.0	58.0	55.0	50.5	48.0	45.0	34.5	29.0
	32 (1.25)		180 (.709)	2.65 (8.7)	48.0	60.0	60.5	57.0	53.0	51.0	42.5	37.0
	25 (1.0)		265 (1.04)	3.0 (9.8)	47.5	59.0	60.5	62.5	59.5	55.0	51.5	47.0
	40 (1.6)	250 (530)	95 (.374)	3.1 (10.2)	51.0	64.0	61.5	57.0	55.5	53.0	45.5	35.5
	32 (1.25)		260 (1.02)	3.35 (11)	51.5	65.0	65.5	63.0	59.5	57.0	51.5	45.0
	40 (1.6)	300 (636)	220 (.866)	3.75 (12.3)	55.5	67.5	65.0	60.0	58.5	55.5	48.5	37.5
	32 (1.25)		500 (1.97)	3.9 (12.8)	53.0	64.5	65.0	69.5	65.5	64.0	59.0	55.5
	40 (1.6)	100 (212)	12 (.047)	1.05 (3.4)	42.5	41.5	35.5	31.0	26.0	11.5	16.5	28.0
	32 (1.25)		15 (.059)	1.35 (4.4)	42.5	41.5	37.0	32.0	26.5	15.5	17.5	27.5
	25 (1.0)		40 (.157)	2.2 (7.2)	42.0	44.0	43.5	39.5	36.5	30.0	24.5	22.0
	40 (1.6)	150 (138)	18 (.071)	1.65 (5.4)	43.0	41.5	38.5	34.0	29.5	16.0	17.5	27.5
	32 (1.25)		20 (.079)	1.85 (6.1)	44.0	45.0	40.5	34.5	32.0	29.5	17.5	28.5
25 (1.0)		73 (.287)	2.8 (9.2)	44.0	50.5	48.0	43.5	41.5	38.5	28.0	21.5	
40 (1.6)	200 (424)	27 (.106)	1.8 (5.9)	45.0	47.5	43.0	39.5	36.0	25.5	17.5	27.5	
32 (1.25)		50 (.197)	2.35 (7.7)	45.0	50.5	46.0	41.5	39.0	32.5	17.5	28.5	
25 (1.0)		110 (.433)	3.40 (11.2)	43.5	54.5	52.5	48.5	47.0	44.5	36.5	28.5	
40 (1.6)	250 (350)	42 (.165)	2.85 (9.3)	48.0	53.5	49.5	44.5	42.5	36.5	17.5	27.5	
32 (1.25)		65 (.256)	3.0 (9.8)	46.0	53.5	51.5	47.0	44.5	39.0	17.5	36.0	
25 (1.0)		165 (.650)	3.8 (12.5)	47.0	57.0	59.5	55.0	52.5	50.5	45.5	35.5	
40 (1.6)	300 (636)	60 (.236)	3.05 (10.0)	51.5	59.0	53.5	49.0	47.0	42.5	32.0	27.5	